



FONTAINE DESIGN GROUP
CABOCHON



SPECIFICATIONS FOR ***CABOCHON***

Make: HOOD / FONTAINE
Model: Custom Pilothouse
Cutter
Length: 92 ft
Price: \$ 1,875,000
Year: 2004
Condition: Used
Location: Portsmouth, R.I.

Boat Name: CABOCHON
Hull Material: Fiberglass
Draft: 7 ft 6 in
Number of Engines: 1
Fuel Type: ` Diesel
Number: 3900281
Sleeps: 8/4
Price: \$1,875,000.00

CABOCHON

Designed for global adventuring, CABOCHON is unique. She has a raised pilothouse with inside steering station, shoal draft and a foil-shaped centerboard for upwind performance under sail.

Construction is fiberglass with laminates of Kevlar for strength and rigidity. With her Hood/Fontaine low-wetted surface hull form, there is unparalleled volume below decks. CABOCHON's spacious accommodations and living space are rarely found in a sailboat of her size, especially one that sails like her and that captures the eye with such flowing and beautiful lines.

MEASUREMENTS

Cruising Speed:	11 kn	Displacement:	198000 Lbs.
Max Speed:	12 kn	Life raft Capacity:	12
Range:	5000 nmi	Fuel Capacity:	2000 Gal
LOA:	92 ft	Water Capacity:	1000 Gal
LWL:	71 ft	Number of Cabins:	5
Beam:	21 ft 10 in	Number of Heads:	6
Max Draft:	7 ft 6 in		
Ballast:	60000 Lbs.		

PROPULSION

Engine Make:	John Deere	Engine Model:	6090SFM75
Engine Year:	2013	Hours:	1009
Primary Engines:	Inboard	Power:	375 hp

ACCOMODATIONS

CABOCHON has accommodations for six - eight adults and two children in the owner's party, with three large private staterooms aft, split-level dining/lounge areas amidships, plus two ensuite cabins forward of the galley for crew. Joinery is finely crafted Euro style teak with a gloss varnish finish.

PILOTHOUSE

The large pilothouse, originally designed for inclement weather, has quickly become the center of activity aboard CABOCHON. It is light and airy with excellent visibility all around. To port is a U-shaped settee and teak table that seats six, great for informal meals, cocktails or just planning the day's activities.

To starboard and forward is the navigation area with throttle and autopilot control, complete with all electronics, nav table and helmsman's seat. Aft of the nav area is a wet bar and coffee machine.

MASTER STATE ROOM

Entered from the pilothouse down full-sized easy-access stairs and hallway, the master State room aft has two queen sized beds, port and starboard, a makeup area, two cedar-lined hanging lockers, plenty of storage space and his and hers bathrooms. Aft, a centerline vestibule leads to a private aft cockpit.

GUEST STATE ROOMS

Forward of the master stateroom and separated by a passageway are two guest staterooms, each with ensuite head and stall shower. Both guest staterooms have two twin beds, plus fold-away pull man berths for children. Both cabins have cedar-lined hanging lockers plenty of storage space, two opening portholes for ventilation and deck prisms for additional natural light.

MAIN SALON

The full beam salon is open to the pilothouse salon, so that the pilothouse windows reach over 50 percent of the salon. Two hatches provide abundant natural light in the salon. To Starboard there is a dining area for six. To port is an L-shaped couch with coffee table and a 40" LCD TV connected to a satellite dish as well as to the central navigation computer. In addition to ample dry storage, there is a built-in wine rack, refrigerator and ice-maker (new 2013).

GALLEY

Forward of the main salon there is a sliding teak door as well as a watertight MCA door, lead to a large, U-shaped galley and crew mess. The fully equipped galley has a large hatch for light and/or fresh air while at anchor, so the running of A/C (new 2013) is often an elective. There are multiple freezer compartments to support 'around-the-world' adventuring.

- Broadwater 4-burner propane stove and oven
- KitchenAid cook top (new 2022)
- KitchenAid microwave oven (new 2013)
- KitchenAid dishwasher
- KitchenAid trash compactor
- Sub Zero vertical refrigerator w/ (2) bottom drawers
- Sub Zero (2) freezer drawers

- Lift-up under-counter freezer compartment outboard (D.C.) (new 2013)
- Sub-sole freezer compartment (D.C.) (new 2013)
- Miscellaneous small appliances
- Extractor fan and lighting over stove
- Double stainless steel sinks w/ retractable faucet (new 2013)
- Corian countertops
- Cork flooring

CREW ACCOMODATIONS

Two double crew cabins are located forward of the galley. Each cabin has its own sink and toilet and shares a centrally located shower.

The crew mess is equipped with its own entertainment center, including LCD TV, DVD, CD and radio. The Miele washer (new 2013) and Miele dryer (overhauled 2011) are located beside the crew mess for easy access.

COCKPITS

Aft of the pilothouse is a large cockpit protected by a rigid bimini top and dodger (both new 2020) for maximum comfort. There is a U-shaped seating area to port with a teak table that opens for cocktails or on-deck dining. Opposite to starboard is an L-shaped seating area with an additional teak table. Blue cushions with white piping (new 2020 Ask Mads) complement the “Whisper Gray” Awlgrip house. Awl Brite finished teak trim and teak deck. In the cockpit there is a top-loading refrigerator to port of the pilothouse companionway and cabinet space to starboard.

Aft of the cockpit area is the raised helm area. A U-shaped settee surrounds the 4.5-foot wheel and pedestal, which accommodates navigational instruments, compass, engine controls and toggle controls for easy command and control of all sail handling. CABOCHON can literally be sailed by just one person without leaving the helm. On the aft deck, there is a private owners' cockpit and hydraulic swim platform for easy access to and from the water.

ELECTRONICS AND NAVIGATION EQUIPMENT

Electronics package updated in 2020.

4x Zeus3 16” Displays, 1 Zeus3 &” Display, Precision 9 Compass (2023), H5000 Wind/Depth Processor, 4 20/20 displays, 4 Triton 2 displays, NAIS 500. Simrad Autopilot. B&G V50 VHF with 3 remote handsets. Kahlenberg Air Horn with M511A Whistle Control.

Starlink installed 2023.

Navigation and communications equipment is MCA- and Global Maritime Distress and Safety System (GMDSS) compliant.

- B&G Hercules 2000 system with Performance Processor, (2) FFDs, (4) 20/20 displays, 360 wind, magnified wind, rudder angle, speed sensor, depth sensor and inclinometer.
- Hercules 2000 Pilot with (2) stations and one remote control. Running either of Gyro or of B&G compass
- Simrad GN33 SDGPS
- Simrad GN54 15" color chart plotter/ radar/ SDGPS/depth sounder with 10" sun view full-function remote at helm station.
- Simrad RA42 color radar with ARPA function
- Navtex NX-300 receiver
- SSB-GMDSS compliant Skanti TRP1150 DSC with SCS PTC-II Pro modem
- VHF - DSC – GMDSS
- (1) RS8400 – GMDSS
- (1) Class B DSC controller for RS8400
- (1) RS87 VHF with active handset
- (1) Additional active handset for RS87 SAT-Com
- (1) Thrane & Thrane TT-3020C w/GPS
- (1) Nera world phone Marine mini-M
- KVH G6 satellite TV
- Fish Finder Furuno FCV-600L installed in dinghy
- Weather Station Oceans SeaStation 2000 Micro
- Weather Fax
- EPIRB ACR GlobalFix 406 Category 1
- Computer Systemax with Nobeltec
- Weather Works (weather radar, satellite, wind-, wave forecast etc.)

HYDRAULICS AND DECK EQUIPMENT

The ship's hydraulics are an integrated system designed by Maxpower. This system allows the functions to be powered by three sources: Maxpower DC-pump or 2 Rexroth Genset driven PTO's. Hydraulic Overhaul in 2020, Backstay hydraulics overhauled 2023

- (2) CQR anchors, with 300 and 500ft chain
- (1) Fortress anchor, 3 piece
- (2) Muir windlasses mounted under hatch
- Solimar flush hatches with solid teak rims
- Teak decks
- Teak bow seat
- (2) Teak stern seats
- Dinghy lift aluminum davits with hydraulic function
- Hydraulic stern stairs and teak boarding platform
- Hot and cold shower, at stairs

- (8) Deck prisms
- Sturdy, rigid bimini, dodger and connective piece (canvas new 2020)
- Viking 8UKL 8 Man liferaft 2015, Revere 4P Solas A Liferaft 2023
- Full list of safety gear
- Chocks on foredeck for dinghy, as well as davits on the stern 2010.

TENDER

14'-11" center console, hard bottom Novurania inflatable including fish finder with depth sounder and nav-lights. New inflatable pontoons, new seats, new steering 2013. Yamaha 60HP 4-stroke outboard engine (overhauled 2011, new carburetor, new lifting motor etc.) New prop 2013.

ENTERTAINMENT SYSTEM

- 40" LCD in salon (new 2012)
- 30" LCD in master stateroom
- 20" LCD in crew mess
- Sat-TV, DVD CD
- Surround sound in salon with additional speakers in pilothouse, cockpit, and aft Cockpit
- Separate system in master stateroom

ELECTRICAL SYSTEM

- (2) Northern Lights 1800 RPM generators 25KW – (Port Gen 9,559hrs/ Stbd Gen 9700hrs)
- 2000Ah Mastervolt batteries (Replacements arriving 9/2023)
- Mastervolt 4 x 100A charging system
- 300A Electrodyne alternator on main engine
- 220V single phase 100A shore power with transformer
- Cablemaster to store 90 foot cable
- (1) 4 KW Inverter for House bank and (1) 2.5KW Mastervolt Inverter for nav station 2023

HULL AND CONSTRUCTION

The hull is built with composite material and a sandwich structure using Core-cell foam core. An additional five layers of Kevlar were incorporated for extra strength. The deck and pilothouse are also sandwich construction with E-glass.

Classification: Lloyd's Construction Hull Certificate

- "Flag Blue" Awlgrip hull (2021) with varnished teak exterior trim
- "Light Gray" Awlgrip nonskid (2006)

- “Whisper Gray” Awlgrip house (2006)
- Integral rubrail with a stainless steel striker
- (4) Watertight bulkheads

ENGINE AND MECHANICAL EQUIPMENT

Large well-laid-out engine room (new paint 2011, 2023) with easy access to all pumps and power, stand up headroom next to main engine.

- John Deere 6-cylinder engine, Model: 6090SFM75 (new 2013, 1074 hrs)
- 90 cm 3-blade Maxprop propeller
- Max Power 35 hp bow thruster (new 2010)
- Chilled water MarineAir air conditioning (new 2022)
- Sea Recovery water maker, 60 gallons/h 11 OV AC
- Sea Recovery water maker, 8 gallons/h 25V DC
- Isotherm water heaters (new 2011, 2022)
- Water pump (new 2022)

SAILS AND RIGGING

World-renowned French Lorimar Carbon Fiber mast with 4 spreaders and in-mast furling, “Whisper Gray” Awlgrip.

Navtec rigging and hydraulics.

Spectra running rigging (mainsheet, outhaul and genoa sheets, new 2012).

SAILS

- 1,944 sq. ft. North Spectra mainsail (new 2023)
- 828 sq. ft. North Spectra (new 2023)
- 2,583 sq. ft. North Spectra genoa (new 2023)
- 5,346 sq. ft. PCS spinnaker
- 204 sq. ft. two-ply Storm Orange Dacron storm (Halsey Lidgard)
- 527 sq. ft. two-ply Storm Orange Dacron trysail (Halsey Lidgard)

CAPTIVE WINCHES

- (4) Nielson (Harken) for genoa and staysail sheets
- (1) Magic Trim for mainsheet
- (1) Magic Trim in boom for outhaul

DECK WINCHES

- (2) Harken 3-speed MPS/running backstay ALL winches full service 2023
- (2) Harken 2-speed halyard/mast winches
- (1) Harken foredeck winch

FURLING GEAR

- Reckmann for main, staysail and headstay (serviced in 2020)
- All sail handling is fingertip controlled via toggles located at the helm station.

REMARKS

Built for an experienced yachtsman, and launched in December 2004, CABOCHON's stout construction, world-class features and attention to detail are evident everywhere, from robust practical engineering and redundant systems to beautifully book-matched teak joinery and dovetailed drawers. CABOCHON is remarkable in that it brings so many desirable features –

Shoal Draft (draft w/ board up = 7' 6"; w/ board down = 18'), performance under sail and comfort at sea, to name a few – together all in one beautiful vessel.

Exceptional Value – inspection highly recommended.

DISCLAIMER

The Company offers the details of this vessel in good faith but cannot guarantee or warrant the accuracy of this information nor warrant the condition of the vessel. A buyer should instruct his agents, or his surveyors, to investigate such details as the buyer desires validated. This vessel is offered subject to prior sale, price change, or withdrawal without notice.

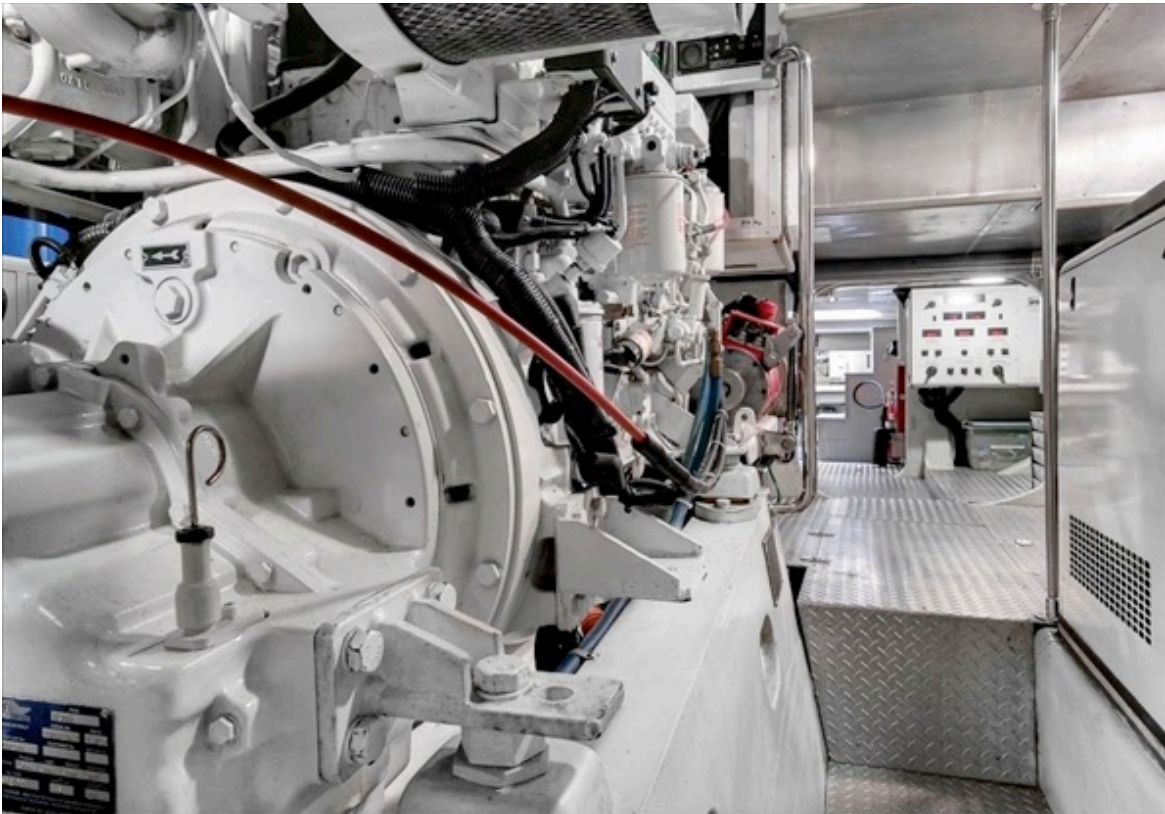


FONTAINE YACHT HOLDINGS LLC
92 Maritime Drive, Portsmouth, RI 02871 USA
Tel: +1 (401) 241-0673, Email: ted@fontainedesigngroup.com
www.fontainedesigngroup.com



FONTAINE YACHT HOLDINGS LLC
92 Maritime Drive, Portsmouth, RI 02871 USA
Tel: +1 (401) 241-0673, Email: ted@fontainedesigngroup.com
www.fontainedesigngroup.com





FONTAINE YACHT HOLDINGS LLC
92 Maritime Drive, Portsmouth, RI 02871 USA
Tel: +1 (401) 241-0673, Email: ted@fontainedesigngroup.com
www.fontainedesigngroup.com



FONTAINE YACHT HOLDINGS LLC
92 Maritime Drive, Portsmouth, RI 02871 USA
Tel: +1 (401) 241-0673, Email: ted@fontainedesigngroup.com
www.fontainedesigngroup.com



FONTAINE YACHT HOLDINGS LLC
92 Maritime Drive, Portsmouth, RI 02871 USA
Tel: +1 (401) 241-0673, Email: ted@fontainedesigngroup.com
www.fontainedesigngroup.com



FONTAINE YACHT HOLDINGS LLC
92 Maritime Drive, Portsmouth, RI 02871 USA
Tel: +1 (401) 241-0673, Email: ted@fontainedesigngroup.com
www.fontainedesigngroup.com



FONTAINE YACHT HOLDINGS LLC
92 Maritime Drive, Portsmouth, RI 02871 USA
Tel: +1 (401) 241-0673, Email: ted@fontainedesigngroup.com
www.fontainedesigngroup.com



FONTAINE YACHT HOLDINGS LLC
92 Maritime Drive, Portsmouth, RI 02871 USA
Tel: +1 (401) 241-0673, Email: ted@fontainedesigngroup.com
www.fontainedesigngroup.com



FONTAINE YACHT HOLDINGS LLC
92 Maritime Drive, Portsmouth, RI 02871 USA
Tel: +1 (401) 241-0673, Email: ted@fontainedesigngroup.com
www.fontainedesigngroup.com