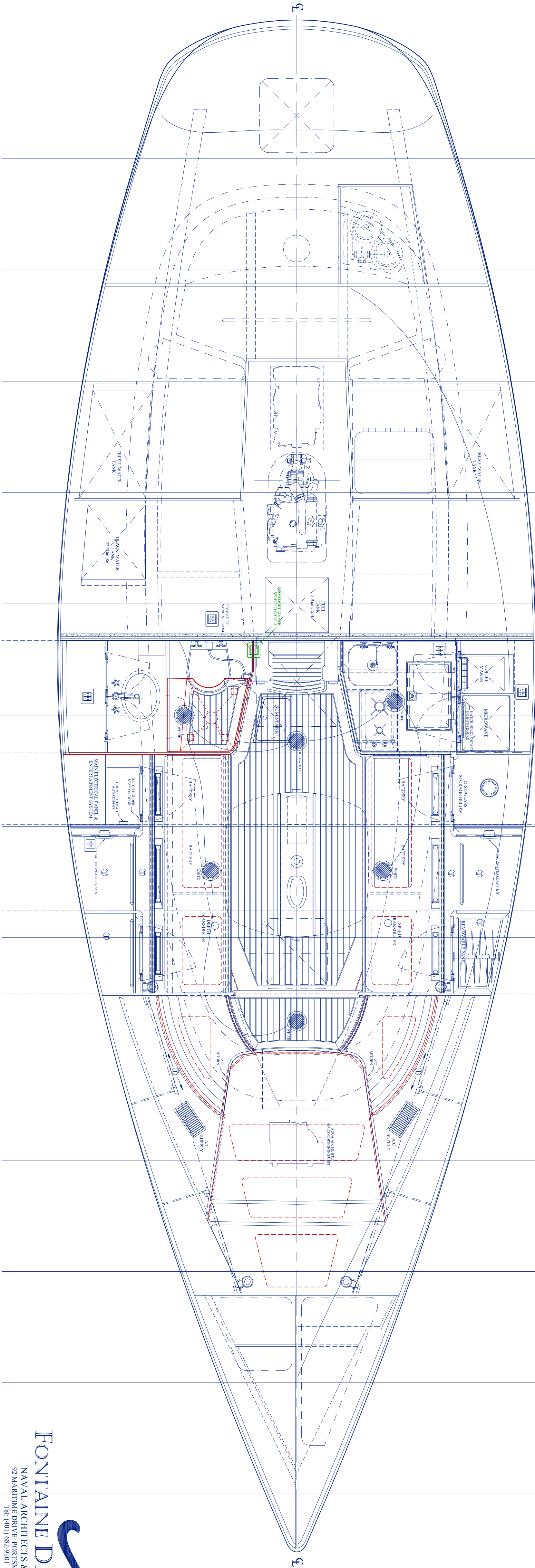
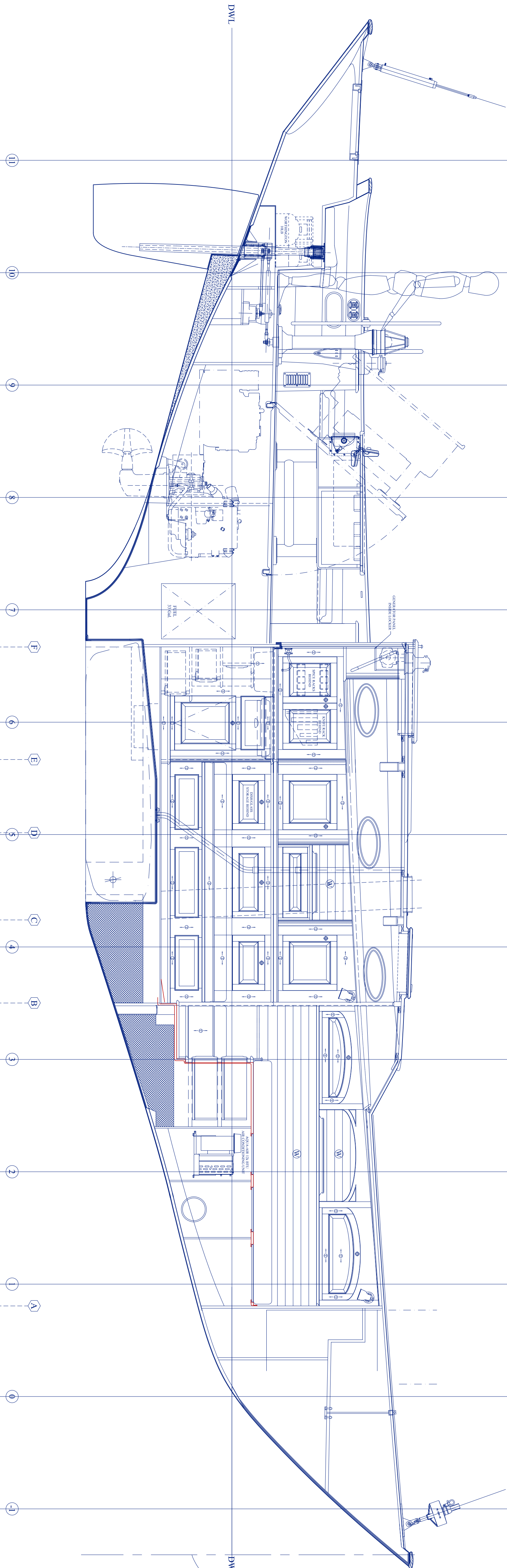


Item	Manufacturer
Trans Bunks	Nesamar emsky white glossy (S-7-270)
Head/Shower	Nesumar emsky white glossy (S-7-270)
Long Surfaces	Quarter sawn Teak w/ satin varnish
Side	Door and drawer frames to be solid
Trunk and truck train	Teak and truck train
Overhead	Painted V-Groove
Hull Ceiling	Painted silk white
Trim	Satin varnished Teak
Deck	Painted silk white
Sliding door	Kron 365002 in polished chrome
Locker Latch	w/ 3/2" 172 lock
Locker Hinge	F.T.L. Bore SS no finish
Drawer Latch	Custom sealing or plain steel pulls
Drawer Slide	Lift and pull by builder
Cabin Door	TBD
Lighting	F.T.L. Bore SS with round ball finish
Hinge	Custom by builder
Cold Box	Sharp K531S, warm & noisy
Microwave	Valpak UP3
Galley Sink	Radi Perum & Rowe #13791 X
Galley Faucet	Stone
Galley Cooktop	TBD
Galley Corian	Varnished Teak and truck resin
Head Sink	Techni Stone Short
Head Spk	Cerium Sink #820
Head Faucet	Gratie Seabury with cross handles in polished chrome
TP Holder	Mico Europe, polished chrome
Tumbler Holder	Mico Pindora, polished chrome
Towel Brass & Mico, polished chrome	
Soap Dish	Mico Agassani, polished chrome
Towel Bar	Mico Pindora, polished chrome
Shampoo & Soap Rack	Mico, polished chrome
Rower Hook	Mico Pindora, polished chrome
Head Corian	Gracier White
Shower	Gratie Seabury cross handles w/ Radiu pins fixed and 2" Gratie shower bar
Service	TBD
Upholstery	TBD
Service Room	32mm non-flammable high density foam
Beach Room	TBD
Beach Fabric	Overhead lights
Overhead lights	Cantlup Zero
Coversey lights	Cantlup 1 LeadB
110V Outlets	Vimar

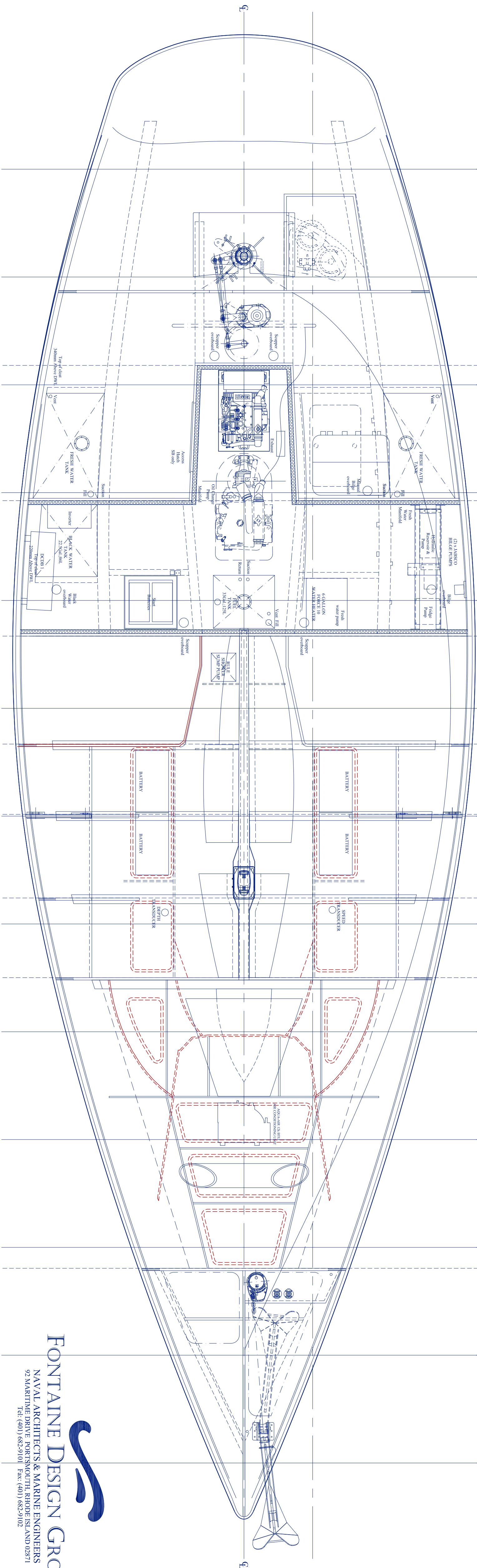
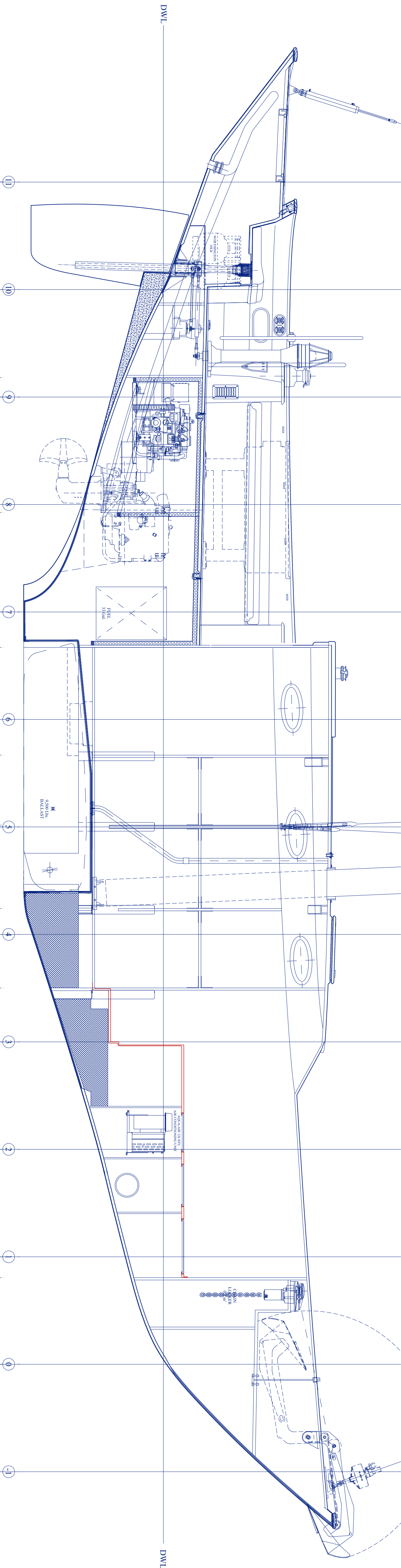
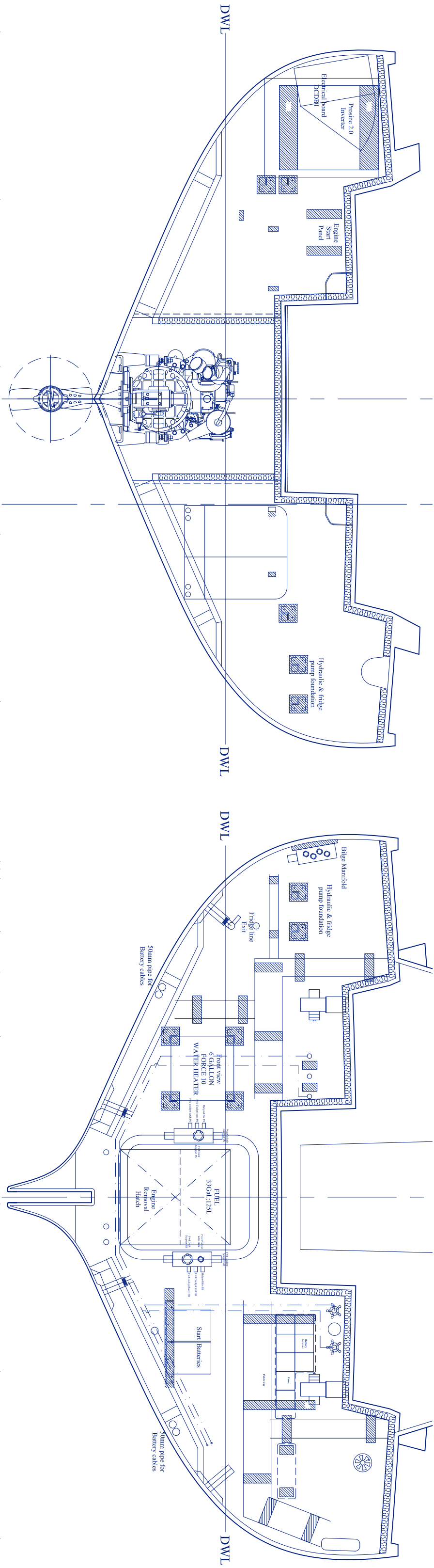


FONTAINE DESIGN GROUP
NAVAL ARCHITECTS & MARINE ENGINEERS
92 MAHAFUL DRIVE, PORTMANOR, RHODE ISLAND 02881
Tel: (401) 682-9101 Fax: (401) 682-9102

THIS DRAWING REPRESENTS DETAILS AND DESIGN FEATURES AS ELEMENTS OF A DESIGN PREPARED BY FONTAINE DESIGN GROUP AND IS TO BE USED ONLY FOR WORK AUTHORIZED IN WRITING BY SAID FIRM. THE USE OF THESE PLANS, DIRECTLY OR INDIRECTLY FOR ANY WORK OTHER THAN AUTHORIZED IS FORBIDDEN AND WILL BE CONSIDERED AN INFRINGEMENT OF THESE RIGHTS. THIS PLAN IS TO BE RETURNED UPON COMPLETION OF SAID WORK. ALL RIGHTS OF DESIGN ARE RESERVED.

No.	CHANGES	DATE	No.	CHANGES	DATE	No.	CHANGES	DATE
-	-	date-	-	-	date-	-	-	date-

GENERAL ARRANGEMENT
FOR
FRIENDSHIP 40-000
STANDARD BOAT
DRAWN BY: BMA CHECKED BY: -
SCALE: 1/20 28 August 2007 DWG: 1004-000-201 Rev. 0



Fontaine Design Group
NAVAL ARCHITECTS & MARINE ENGINEERS
92 NARRAGANSETT AVENUE, SUITE 100, PORTSMOUTH, RHODE ISLAND 02871
TEL: (401) 882-9101 FAX: (401) 882-9102

MECHANICAL ARRANGEMENT

THIS DRAWING REPRESENTS DETAILS AND DESIGN FEATURES AS ELEMENTS OF A DESIGN PREPARED BY FONTAINE DESIGN GROUP AND IS TO BE USED ONLY FOR WORK AUTHORIZED IN WRITING BY SAID FIRM. THE USE OF THESE PLANS, DIRECTLY OR INDIRECTLY FOR ANY WORK OTHER THAN AUTHORIZED IS FORBIDDEN AND WILL BE CONSIDERED AN INFRINGEMENT OF THESE RIGHTS. THIS PLAN IS TO BE RETURNED UPON COMPLETION OF SAID WORK. ALL RIGHTS OF DESIGN ARE RESERVED.

No.	CHANGES	DATE
-	-	date-

No.	CHANGES	DATE
-	-	date-

No.	CHANGES	DATE
-	-	date-

FOR
FRIENDSHIP 40-000
STANDARD BOAT
DRAWN BY: BMA CHECKED BY: -
SCALE: 1/20 28 August 2007 DWG: 1004-000-210 Rev. 0

FRIENDSHIP 40

RM	210 kgm	1519lbf	Excl Crew @ 1deg Heel
RM	5863 kgm	42klbf	Excl Crew @ 30deg Heel
I	16.829m	55.21ft	From Height of Tack, Along Mast
P	15.764m	51.72ft	From BAS to Top, Along Mast
J	4.981m	16.34ft	From Tack to Mast, Horizontally
E	5.388m	17.68ft	From Aft Face of Mast
BAS	1.661m	5.45ft	Datum to Boom, Along Mast
Dx	3.935m	12.91ft	Origin to Datum, X-Dim
Dz	1.010m	3.31ft	Origin to Datum, Z-Dim
beta	3deg	3deg	Mast Rake
HT	0.430m	1.41ft	Height of Tack Above Datum, Vertical
MLL	0.249m	0.82ft	Longitudinal Length of Mast
Lhdbrd	0.075m	0.25ft	Longitudinal Length of Headboard
BURY	1.549m	5.08ft	From Sheer to Mast Step, Along Mast

PANEL PROPERTIES

EI kNm ² (Min.)			EI lbm ² x10 ⁶ (Min.)		
PANEL 0	1660	531	PANEL 0	579	185
PANEL 1	1277	462	PANEL 1	445	161
PANEL 2	1068	439	PANEL 2	372	153
PANEL 3	0987	481	PANEL 3	344	168
I cm ⁴	E Gpa	80	I in ⁴	E MSI	12
PANEL 0	2075	664	PANEL 0	50	16
PANEL 1	1596	578	PANEL 1	38	14
PANEL 2	1334	548	PANEL 2	32	13
PANEL 3	1234	602	PANEL 3	30	14

STAY SPECIFICATIONS

	SIZE	STRENGTH	LENGTH	STRENGTH	LENGTH
V1	-17	7940kg	6037mm	17500lb	237.7in
V2	-10	4670kg	4877mm	10300lb	192.0in
D1	-17	7640kg	5855mm	17500lb	230.5in
D2	-10	4670kg	4807mm	10300lb	189.5in
D3	-10	4670kg	5154mm	10300lb	202.9in
FORESTAY	-17	7640kg	17295mm	17500lb	680.9in
BACKSTAY	-10	4670kg	18376mm	10300lb	723.5in

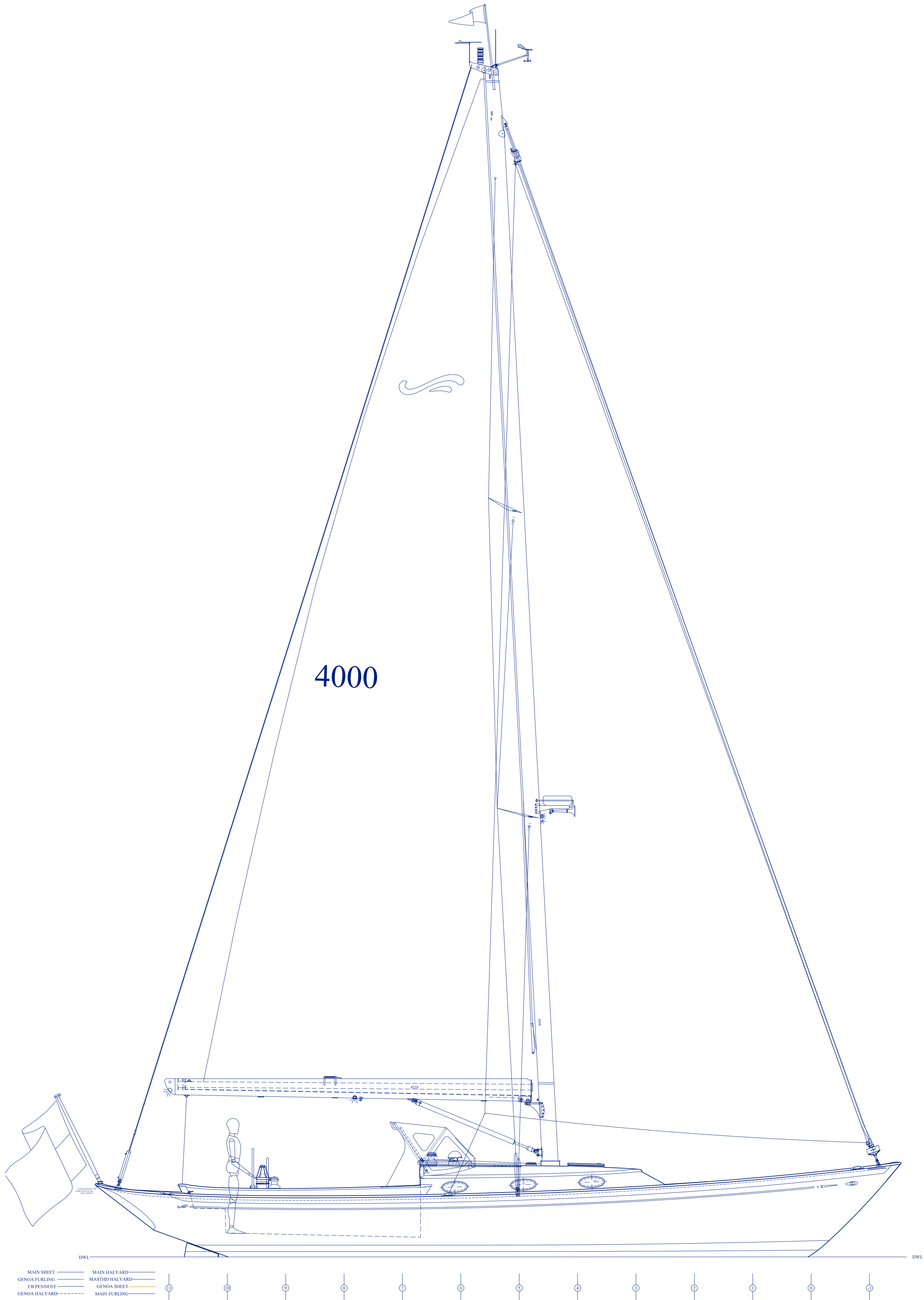
MAST SECTION SPECIFICATIONS

SECTION	NZR 234
MATERIAL	ALUMINUM
LONGITUDINAL DIM	234mm
TRANSVERSE DIM	154mm
WALL THICKNESS	3.4mm
MOM. OF INERTIA	2084 x 875cm ⁴
DENSITY	8.2kg/m ³

RUNNING RIGGING SPECIFICATIONS

	QTY	ROPE SIZE/MATL	FLECK	LENGTH	DESCRIPTION
MAIN HALYARD	1	12mm Spectra Braid	Red	39m/128ft	#93-76 Headboard (captive pin shackle)
GENOA HALYARD	1	12mm Spectra Braid	None	18m/60ft	D-shackle with captive pin
MPS HALYARD	1	12mm Spectra Braid	Blue	40m/130ft	Snap shackle
MAIN SHEET	1	14mm XLS Dacron	Red	12m/40ft	Eye Splice onto D-shackle w/ capt. pin
GENOA SHEET	2	14mm XLS Dacron	None	16m/52ft	Whip Ends
MPS SHEET	2	12mm XLS Dacron	Blue	25m/82ft	Whip Ends, snatch blocks provided
CENTERB'D PENNANT	1	10mm Spectra Braid	Black	8m/26ft	Whip Ends, marking at raised position
MAIN SAIL FURL LINE	1	8mm Spectra Braid	Red	30m/98ft	Whip Ends
GENOA FURL LINE	1	8mm Spectra Braid	None	30m/98ft	Remove jacket at drum, Whip Ends
TOPPER/PREVENTER	1	10mm Spectra Braid	None	39m/128ft	Whip Ends, captive shackle

VANG	1	Hydraulic Cylinder	-	-	Navtec A850-VC-017
BACKSTAY	1	Hydraulic Cylinder	-	-	Navtec 250-SE-012



Fontaine Design Group
NAVAL ARCHITECTS & MARINE ENGINEERS
92 MARITIME DRIVE PORTSMOUTH, RHODE ISLAND 02871
Tel: (401) 682-9101 Fax: (401) 682-9102

THIS DRAWING REPRESENTS DETAILS AND DESIGN FEATURES AS ELEMENTS OF A DESIGN PREPARED BY FONTAINE DESIGN GROUP AND IS TO BE USED ONLY FOR WORK AUTHORIZED IN WRITING BY SAID FIRM. THE USE OF THESE PLANS, DIRECTLY OR INDIRECTLY FOR ANY WORK OTHER THAN AUTHORIZED IS FORBIDDEN AND WILL BE CONSIDERED AN INFRINGEMENT OF THESE RIGHTS. THIS PLAN IS TO BE RETURNED UPON COMPLETION OF SAID WORK. ALL RIGHTS OF DESIGN ARE RESERVED.

No.	CHANGES	DATE
-	-	date-

No.	CHANGES	DATE
-	-	date-

SAIL PLAN
FOR
FRIENDSHIP 40-000
STANDARD BOAT

DRAWN BY: BMA CHECKED BY: -
SCALE: 1:40 28 August 2007 Dwg. 1004-000-307 Rev. 0